



METAL.IT



tempo acciaio minimale
contemporaneo

Moderna, essenziale e ricercata, **METAL.IT** è una collezione che si ispira all'acciaio spazzolato, graffiato dal costante utilizzo e dall'inesorabile passaggio del tempo.

La collezione è stata ideata per rivestire gli ambienti moderni, cosmopoliti, eleganti e mai scontati.

Luoghi pubblici o privati dove l'involucro rappresenta un contenitore puro ed essenziale per mettere in risalto architetture minimali, rigorose senza mai essere fredde e asettiche.

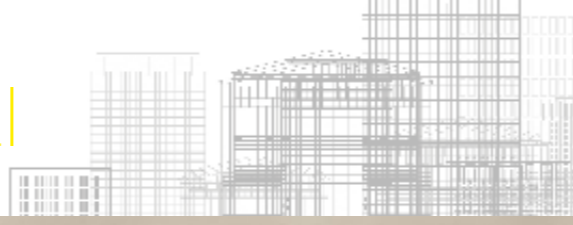
Il nome selezionato per la serie intende sottolineare la grande attualità del design contemporaneo italiano.

*Modern, simple and sophisticated, **Metal.it** is a collection inspired by brushed steel, scratched with constant use and the inexorable passage of time.*

The collection is designed for modern, cosmopolitan interiors which are elegant and never banal.

Public or private locations where the building's shell becomes a pure, simple container, emphasising minimalist architectural forms which are severe but never cold or sterile.

The name chosen for the series is intended to underline the trendiness of Italian contemporary design.



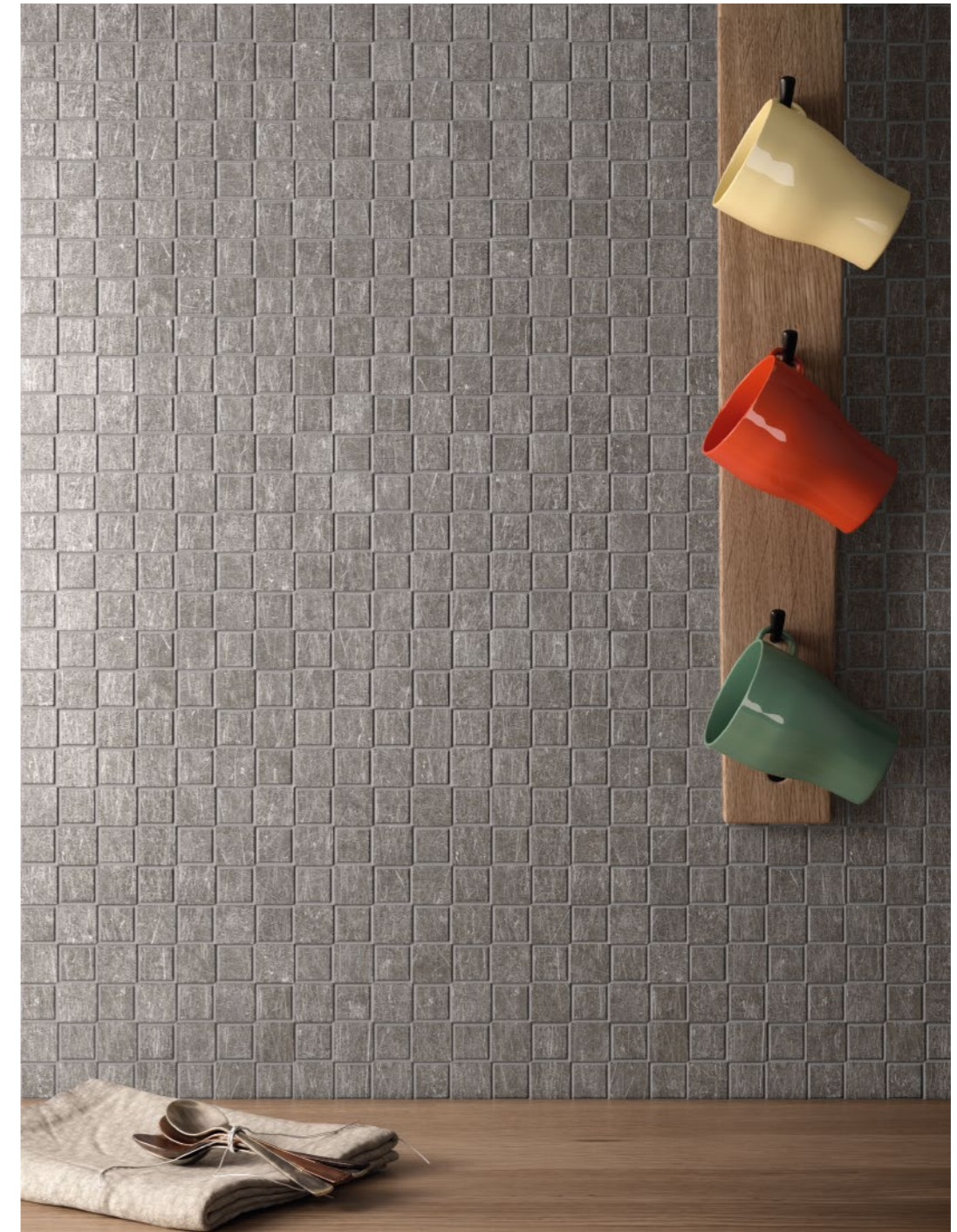
Platinum Nat. Rett.
60x60 - 23^{5/8}"x23^{5/8}"

Corten Nat. Rett. Metal Style
60x120 - 23^{5/8}"x47^{1/4}"





Black Nickel Nat. Mosaico Tip Tap
30x30 - 11^{13/16}"x11^{13/16}"



residential contemporary apartment

Platinum Nat. Rett.
60x120 - 23^{5/8}"x47^{1/4}"



minimal studio **public**

Steel Nat. Rett.
60x120 - 23^{5/8} x 47^{1/4}"

Calamine Nat. Rett. **Metal Style**
60x120 - 23^{5/8} x 47^{1/4}"

Steel Nat. Rett.
60x60 - 23^{5/8}"x23^{5/8}"

Calamine Nat. Rett. Metal Style
60x120 - 23^{5/8}"x47^{1/4}"







Black Nickel Nat. Rett.
60x120 - 23^{5/8}"x47^{1/4}"



metal.it

COLORS

Introducing
trims

platinum

SIZES

steel

black
nickel





platinum

FORMATI

SIZES / FORMATS / FORMATE / TAMAÑOS / ФОРМАТЫ



60x120 - 23^{5/8}"x47^{1/4}"
E7Q6 Platinum Nat. Rett. U₄ P₃ E₃ C₂
E7Q5 Platinum Lapp. Rett.

● 89
● 96



60x60 - 23^{5/8}"x23^{5/8}"
E33V Platinum Nat. Rett. U₄ P₄₊ E₃ C₂
E33U Platinum Lapp. Rett.

● 73
● 83



30x60 - 11^{13/16}"x23^{5/8}"
E3HU Platinum Nat. Rett.

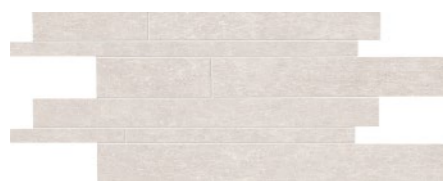
● 66

Si consiglia la posa con fuga 2 mm. - Laying with a 2 mm-joint is recommended.
Pose recommandée avec joints de 2 mm. - Es wird eine Fugenbreite von 2 mm empfohlen.
Se recomienda la colocación con juntas de 2 mm. - Рекомендуется укладка с швом 2 мм.

DECORI

DECORS / DECORS / DEKORE / DECORADOS / ДЕКОРЫ

Listelli sfalsati*

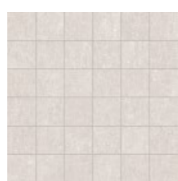


30x60 - 11^{13/16}"x23^{5/8}"
E3EX Platinum Nat.

● 113

Mosaico 5x5*

Tessera - Chip
4,8x4,8 - 1^{7/8}"x1^{7/8}"



30x30 - 11^{13/16}"x11^{13/16}"
E3EL Platinum Nat.

● 130

Mosaico Tip Tap*

Tessera - Chip
2,85x2,85 - 1^{1/8}"x1^{1/8}"
2,4x2,4 - 1^{5/16}"x1^{5/16}"



30x30 - 11^{13/16}"x11^{13/16}"
E3FG Platinum Nat.
E3FF Platinum Lapp.

● 142
● 145

* Su rete in fibra - On fibre mesh backing - Sur filet en fibre de verre - Auf Glasfasernetz - Sobre malla de fibra - На волоконной сетке



steel

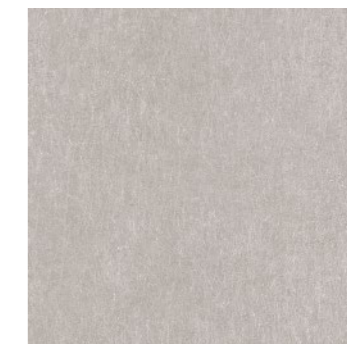
FORMATI

SIZES / FORMATS / FORMATE / TAMAÑOS / ФОРМАТЫ



60x120 - 23^{5/8}"x47^{1/4}"
E7Q8 Steel Nat. Rett. U₄ P₃ E₃ C₂
E7Q7 Steel Lapp. Rett.

● 89
● 96



60x60 - 23^{5/8}"x23^{5/8}"
E33X Steel Nat. Rett. U₄ P₄₊ E₃ C₂
E33W Steel Lapp. Rett.

● 73
● 83



30x60 - 11^{13/16}"x23^{5/8}"
E3HX Steel Nat. Rett.

● 66

Si consiglia la posa con fuga 2 mm. - Laying with a 2 mm-joint is recommended.
Pose recommandée avec joints de 2 mm. - Es wird eine Fugenbreite von 2 mm empfohlen.
Se recomienda la colocación con juntas de 2 mm. - Рекомендуется укладка с швом 2 мм.

DECORI

DECORS / DECORS / DEKORE / DECORADOS / ДЕКОРЫ

Listelli sfalsati*



30x60 - 11^{13/16}"x23^{5/8}"
E3EY Steel Nat.

● 113

Mosaico 5x5*

Tessera - Chip
4,8x4,8 - 1^{7/8}"x1^{7/8}"



30x30 - 11^{13/16}"x11^{13/16}"
E3EM Steel Nat.

● 130

Mosaico Tip Tap*

Tessera - Chip
2,85x2,85 - 1^{1/8}"x1^{1/8}"
2,4x2,4 - 1^{5/16}"x1^{5/16}"



30x30 - 11^{13/16}"x11^{13/16}"
E3FJ Steel Nat.
E3FH Steel Lapp.

● 142
● 145

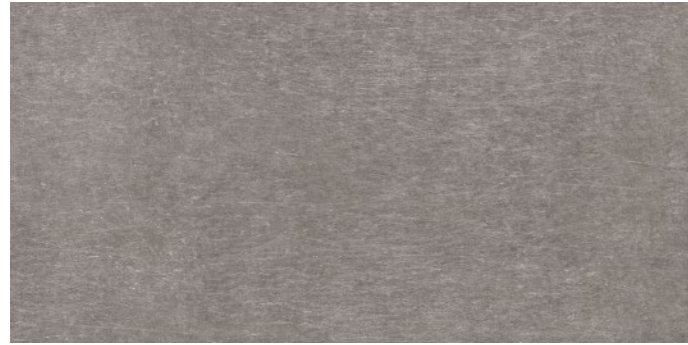
* Su rete in fibra - On fibre mesh backing - Sur filet en fibre de verre - Auf Glasfasernetz - Sobre malla de fibra - На волоконной сетке



FORMATI

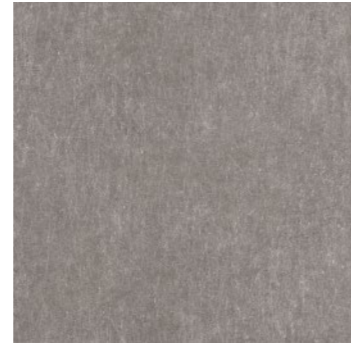
SIZES / FORMATS / FORMATE / TAMAÑOS / ФОРМАТЫ

black nickel



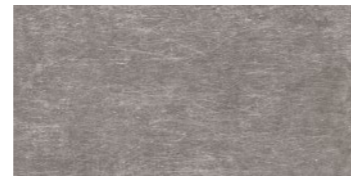
60x120 - 23^{5/8}"x47^{1/4}"
E7QA Black Nickel Nat. Rett. U₄P₃E₃C₂
E7Q9 Black Nickel Lapp. Rett.

● 89
● 96



60x60 - 23^{5/8}"x23^{5/8}"
E33Z Black Nickel Nat. Rett. U₄P₄₊E₃C₂
E33Y Black Nickel Lapp. Rett.

● 73
● 83



30x60 - 11^{13/16}"x23^{5/8}"
E3J0 Black Nickel Nat. Rett.

● 66

Si consiglia la posa con fuga 2 mm. - Laying with a 2 mm-joint is recommended.
Pose recommandée avec joints de 2 mm. - Es wird eine Fugenbreite von 2 mm empfohlen.
Se recomienda la colocación con juntas de 2 mm. - Рекомендуется укладка с швом 2 мм.

DECORI

DECORS / DECORS / DEKORE / DECORADOS / ДЕКОРЫ

Listelli sfalsati*

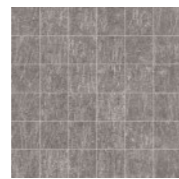


30x60 - 11^{13/16}"x23^{5/8}"
E3EZ Black Nickel Nat.

● 113

Mosaico 5x5*

Tessera - Chip
4,8x4,8 - 1^{7/8}"x1^{7/8}"

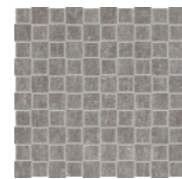


30x30 - 11^{13/16}"x11^{13/16}"
E3EN Black Nickel Nat.

● 130

Mosaico Tip Tap*

Tessera - Chip
2,85x2,85 - 1^{1/8}"x1^{1/8}"
2,4x2,4 - 1^{5/16}"x1^{5/16}"



30x30 - 11^{13/16}"x11^{13/16}"
E3FL Black Nickel Nat. ● 142
E3FK Black Nickel Lapp. ● 145

* Su rete in fibra - On fibre mesh backing - Sur filet en fibre de verre - Auf Glasfasernetz - Sobre malla de fibra - На волоконной сетке



Listelli Safalsati Black Nickel Nat.
30x60 - 11^{13/16}"x23^{5/8}"



PEZZI SPECIALI

TRIMS / PIECES SPECIALES / FORMTEILE / PIEZAS ESPECIALES / СПЕЦИАЛЬНЫЕ ИЗДЕЛИЯ

	Dimensione Size				Fascia di prezzo Price band			
 Battiscopa - Skirting	Nat. Rett. 7x60 - 2 ^{3/4} "x23 ^{5/8} " Pcs. Box 14 - LM x Box 8,40	E39G	E39H	E39J	● 16			
	Nat. Rett. 4,6x60 - 1 ^{13/16} "x23 ^{5/8} " Pcs. Box 20 - LM x Box 12	E3CU	E3CV	E3CW	● 16			
 Gradino - Stair Tread	Nat. Rett. 33x120 - 12 ^{15/16} "x47 ^{1/4} " Pcs. Box 2 - LM x Box 2,40	E9HG	E9HH	E9HJ	● 120			
 Gradone - Step	Nat. Rett. 33x120x3,2x3,2 12 ^{15/16} "x47 ^{1/4} "x1 ^{1/4} "x1 ^{1/4} " Pcs. Box 2 - LM x Box 2,40	E9GQ	E9GS	E9GU	● 139			
	Lapp. Rett. 33x120x3,2x3,2 12 ^{15/16} "x47 ^{1/4} "x1 ^{1/4} "x1 ^{1/4} " Pcs. Box 2 - LM x Box 2,40	E9GP	E9GR	E9GT	● 141			
 Angolare Dx Sx Corner Tile Dx Sx	Nat. Rett. 33x120x3,2x3,2 12 ^{15/16} "x47 ^{1/4} "x1 ^{1/4} "x1 ^{1/4} " Pcs. Box 1 - LM x Box 1,20	DX E9GH	SX E9GJ	DX E9GK	SX E9GL	DX E9GM	SX E9GN	● 142
	Lapp. Rett. 33x120x3,2x3,2 12 ^{15/16} "x47 ^{1/4} "x1 ^{1/4} "x1 ^{1/4} " Pcs. Box 1 - LM x Box 1,20	DX E9HP	SX E9HQ	DX E9HR	SX E9HS	DX E9HT	SX E9HU	● 145

CARATTERISTICHE TECNICHE

Technical Features - Caracteristiques Techniques - Technische Eigenschaften
Technische Eigenschaften - Caracteristicas Tecnicas - Технические Характеристики

NORMA

Standard - Norme
Norm - Norma - Нормы

VALORI

Value - Valeur
Vorgabe - Valor - Средние

	ASSORBIMENTO D'ACQUA (VALORE MEDIO IN %) Water absorption (Average value expressed in %) - Absorption d'eau (Valeur moyenne en %) Wasseraufnahme (Durchschnittswert in %) - Absorción de agua (Valor medio en %) - Поглощение воды	UNI EN ISO 10545/3 ASTM C373	CONFORME COMPLIANT	
	RESISTENZA ALLA FLESSIONE Modulus of rupture - Resistance a la flexion - Biegefestigkeit Resistencia a la flexion - Прочность на изгиб	SPESSORE UNI EN ISO 10545/4	10 mm ≥ 45 N/mm ²	
	FORZA DI ROTTURA Breaking strength - Résistance à la rupture - Bruchlast - Resistencia a la rotura - Разрывное усилие	UNI EN ISO 10545/4 ASTM C648	≥ 2000 N 400 Lbs	
	RESISTENZA AL GELO Frost resistance - Résistance au gel - Frostbeständigkeit Resistencia a las heladas - Морозостойкость	UNI EN ISO 10545/12 ASTM C1026	CONFORME UNAFFECTED	
	RESISTENZA CHIMICA AD ALTE E BASSE CONCENTRAZIONI DI ACIDI E BASI Chemical resistance to high and low acid and basic concentrations Résistance chimique aux hautes et basses concentrations d'acides et de bases Chemikalienfestigkeit bei hohen und niedrigen Konzentrationen von Säuren und Basen Resistencia química con concentraciones altas y bajas de ácidos y bases Химическая стойкость к высоким и низким концентрациям кислот и щелочей	UNI EN ISO 10545/13 ASTM C-650	A - LA - HA UNAFFECTED	
	RESISTENZA ALLE MACCHIE Stain resistance - Résistance aux taches - Fleckenbeständigkeit Resistencia a las manchas - Стойкость к образованию пятен	UNI EN ISO 10545/14	5	
	COEFFICIENTE DI ATTRITO Slip resistance Coefficient de glissement Rutschfestigkeit Barfußbereich Coeficiente de atrito medio Коэффициент трения	DIN 51130 DIN 51097 ANSI A 137.1- 2012 DCOF (Section 9.6) B.C.R.A. AS 4586: 2013 Slip resistance classification of new pedestrian surface materials BS 7976-2: 2002 Pendulum testers ENV 12633-2006 Method of determination of unpolished and polished slip/skid resistance value	NAT. R10 B (A+B) WET ≥ 0,50 ≥ 0,40 P2 < 36 Moderate Slip potential - -	LAPP. - - - - - -

Per maggiori chiarimenti sui dati tecnici e sulla garanzia consultare il catalogo generale in vigore. - For further information on technical specifications, please consult our up-dated general catalogue. - Pour toutes informations supplémentaires sur les données techniques et sur les garanties, veuillez consulter le catalogue general en vigueur. - Für weitere Informationen über technische Daten und Garantie beziehen sie sich bitte auf den aktuellen Gesamtkatalog. - Para posteriores informaciones sobre los datos técnicos y la garantía, vease el catalogo general en vigor. - Более подробную информацию о технических данных и гарантии смотрите в действующем сводном катал.



PRODUCT CERTIFIED FOR LOW CHEMICAL EMISSIONS: UL COM/CG UL 2818



放射性水平A类



Min. 7,5%



Formato Size Format Format Тamaño Формат cm	Spessore Thickness Epaisseur Stärke Espesor Толщина mm	Pz. x Mq. Pieces x Sqm Pcs / M ² Stk. x Qm Pzs x Mc. Шт x Кв.М.	Pz. x Scat. Pieces x Box Pcs / Bte Stk. x Krt. Pzs x Caja Шт x Кор.	Mq. x Scat. Sqm x Box M ² / Bte Qm x Krt. Mc. x Caja Кв.М. x Кор.	Peso x Scat. Weight x Box Poids / Bte Gewicht x Krt. Peso x Caja Вес x Кор. Kg	Scat. x Pal. Boxes x Pal. Bte / Pal. Krt. x Pal. Cajas x Pal. Кор. x Подд.	Mq. x Pal. Sqm x Pal. M ² / Pal. Qm x Pal. Mc. x Pal. Кв.М x Подд.	Peso x Pal. Weight x Pal. Poids / Pal. Gewicht x Pal. Peso x Pal. Вес x Подд. Kg
60x120 Naturale - Lappato	10	1,39	2	1,440	33,06	36	51,84	1190
60x60 Naturale - Lappato	10	2,78	3	1,080	23,73	40	43,20	949
30x60 Naturale Lappato	10	5,56	6	1,080	23,70	40	43,20	948
30x30 Mosaici	10	11,11	5	0,450	10,50	60	27,00	630
30x60 Listelli sfalsati	10	5,56	4	0,720	16,70	30	21,60	501





Ergon is a brand of Emilceramica S.r.l. a socio unico	Sede Commerciale/ Amministrativa
emilgroup.it/ergon emilgroup.it	Via Ghiarola Nuova, 29 - 41042 Fiorano Modenese - Mo Italy T +39 0536 835111 - info@emilceramicagroup.it